

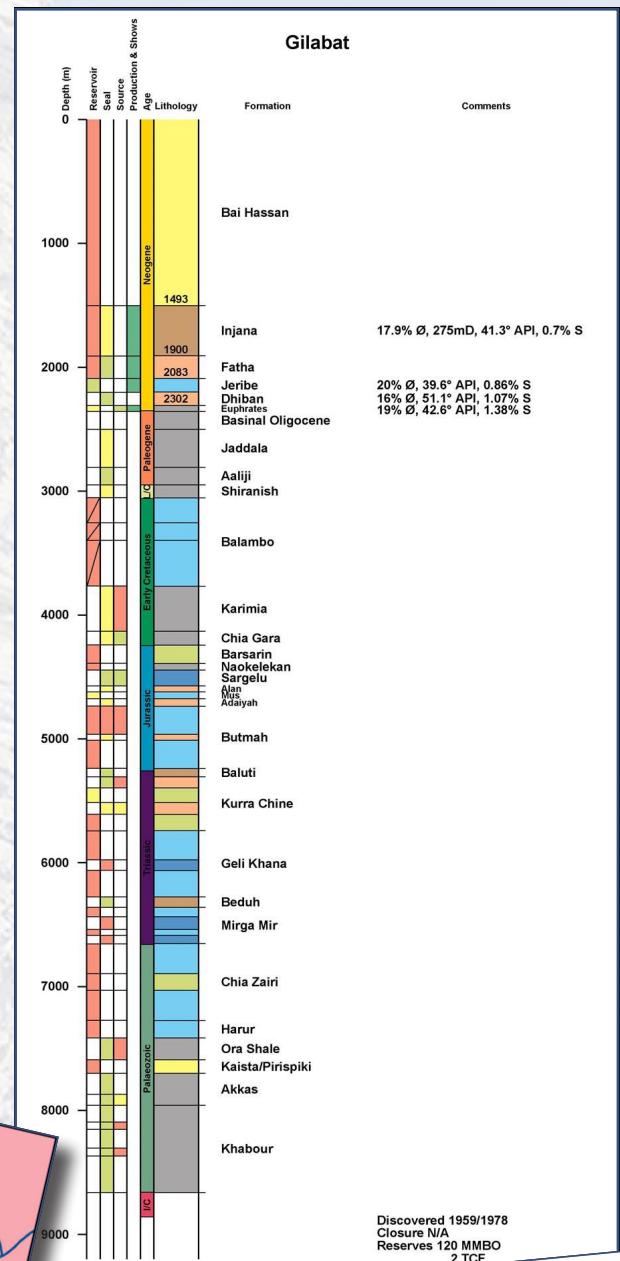
Field Evaluations

Individual reports available on the following fields: Badra, East Baghdad, Garraf, Kifl area, Majnoon, Najmah-Qaiyarah, Nau Doman area and Siba.

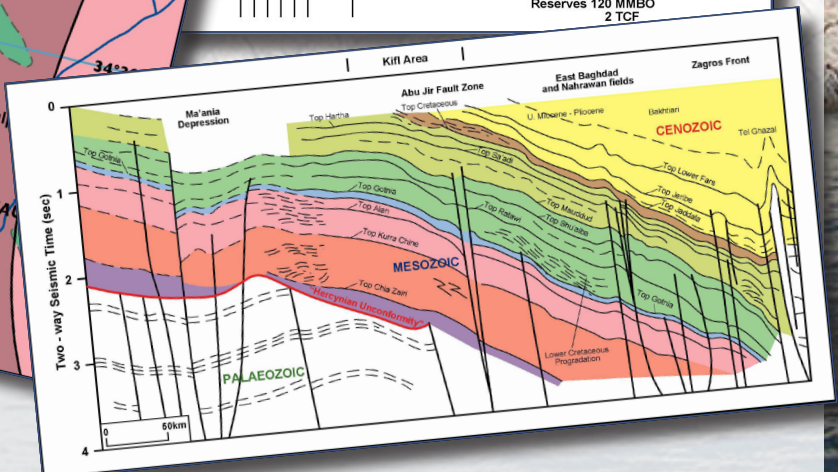
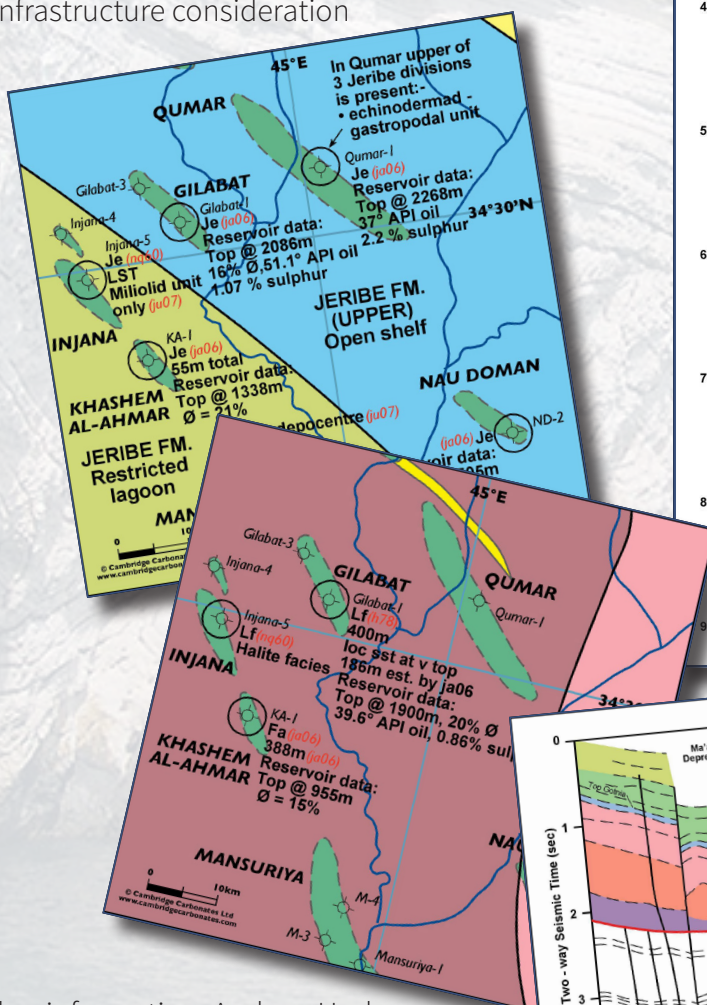
The reports provides an overview of the main fields and adjacent areas. Comprehensively presenting publicly available data on fields and discoveries for purposes of field evaluation.

Reports contain:

- Reservoir stratigraphy
- Depth and structure
- Economic data
- Infrastructure consideration



Discovered 1959/1978
Closure N/A
Reserves 120 MMBO
2 TCF



Further information: Andrew Horbury
T: +44 (0)121 705 8472
E: andy@cambridgecarbonates.co.uk